



CEDAR CREEK

MODEL HOME: 3368 N 10TH STREET
RIDGEFIELD, WA 98642
JBHOMESWA.COM

THE 2431 2-CAR/3-CAR



2-CAR BASE PRICE \$469,900

3-CAR BASE PRICE \$489,900

FLOORPLAN DETAILS

- 2,431 Square Feet
- 2 Story
- 4 Bedroom
- 2-1/2 Bathroom
- Great Room
- Den
- Laundry Room
- Dining Nook
- 2 or 3 Car Garage
- Pantry
- Walk-in Master Closet
- Soaking Tub in Master with Tile Surround
- Covered Front Entry Porch
- Covered Rear Porch

THIS HOME'S FEATURES

- Covered deck or patio (plan specific)
- Fully landscaped with irrigation and fencing
- Gas fireplace w/ Blower
- Stainless steel appliances
- 95% efficient gas forced-air furnace
- Air conditioning
- Laminate flooring
- Slab countertops
- Millwork wrapped windows
- James Hardie fibercement lap siding and trim, including all windows
- Finished garage with opener, remote and keypad
- Exterior Cultured stone accents on front elevation
- 30 year roof
- Tiled bathroom counters
- 9' ceilings on main floor



NATHAN CANO, BROKER

Hire an Agent, Get a Team
www.canorealestate.com

360-558-3602

jbhomes@canorealestate.com
www.jbhomeswa.com



WA LICENSE:
JBHOMH*914Q5

REV 06/25/18 JB-Cedar-Creek-Floor-Plan-2431

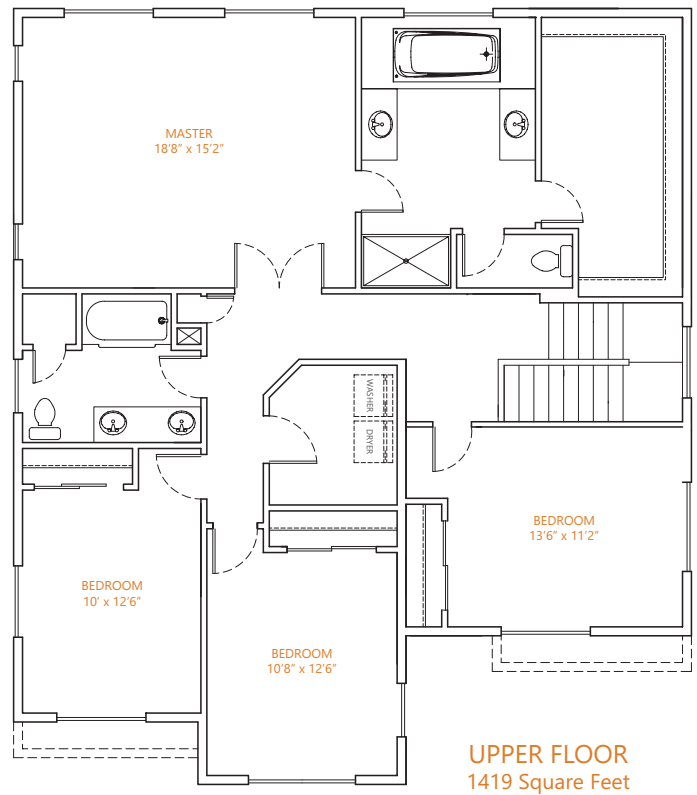
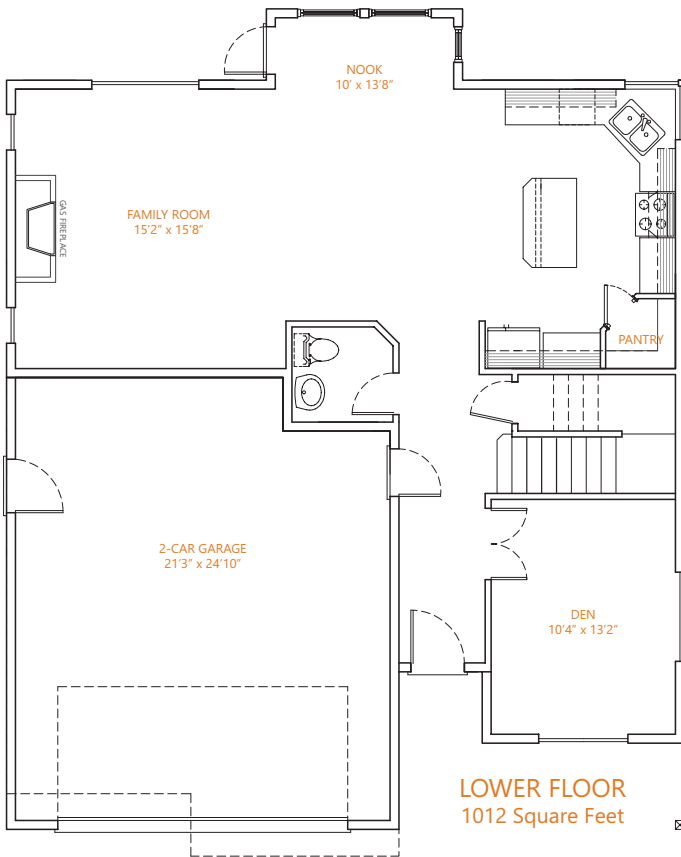
* JB Homes reserves the right to change elevations, specification, materials and pricing without prior notice. Variations within the floor plans and elevations may exist. Square footages are approximate and may vary. All floor plans and elevations are artist's conceptions.



CEDAR CREEK

MODEL HOME: 3368 N 10TH STREET
RIDGEFIELD, WA 98642
JBHOMESWA.COM

THE 2431 2-CAR/3-CAR



NATHAN CANO, BROKER
Hire an Agent, Get a Team
www.canorealestate.com

360-558-3602
jbhomes@canorealestate.com
www.jbhomeswa.com



WA LICENSE:
JBHOMH*914Q5

* JB Homes reserves the right to change elevations, specification, materials and pricing without prior notice. Variations within the floor plans and elevations may exist. Square footages are approximate and may vary. All floor plans and elevations are artist's conceptions.