



# CEDAR CREEK

MODEL HOME: 3368 N 10TH STREET  
RIDGEFIELD, WA 98642  
JBHOMESWA.COM

## THE 2712 2-CAR



### 2712 2-CAR GARAGE PLAN

BASE PRICE \$509,900

#### FLOORPLAN DETAILS

- 2,712 Square Feet
- 2 Story
- 2-Car / 3-Car Garage Versions
- 4 Bedroom
- 2-1/2 Bathroom
- Great Room
- Laundry Room
- Den
- Dining Nook
- Pantry
- Large Walk-in Master Closet
- Soaking Tub in Master with Tile Surround
- Covered Front Entry Porch
- Covered Rear Porch

#### THIS HOME'S FEATURES

- Covered deck or patio (plan specific)
- Fully landscaped with irrigation and fencing
- Gas fireplace w/ Blower
- Stainless steel appliances
- 95% efficient gas forced-air furnace
- Air conditioning
- Laminate flooring
- Slab countertops
- Millwork wrapped windows
- James Hardie fibercement lap siding and trim, including all windows
- Finished garage with opener, remote and keypad
- Exterior Cultured stone accents on front elevation
- 30 year roof
- Tiled bathroom counters
- 9' ceilings on main floor



**NATHAN CANO, BROKER**

Hire an Agent, Get a Team  
www.canorealestate.com

**360-558-3602**

jbhomes@canorealestate.com  
www.jbhomeswa.com



WA LICENSE:  
JBHOMH\*914Q5

REV 06/25/18 JB-CANO-CEDAR CREEK 2712

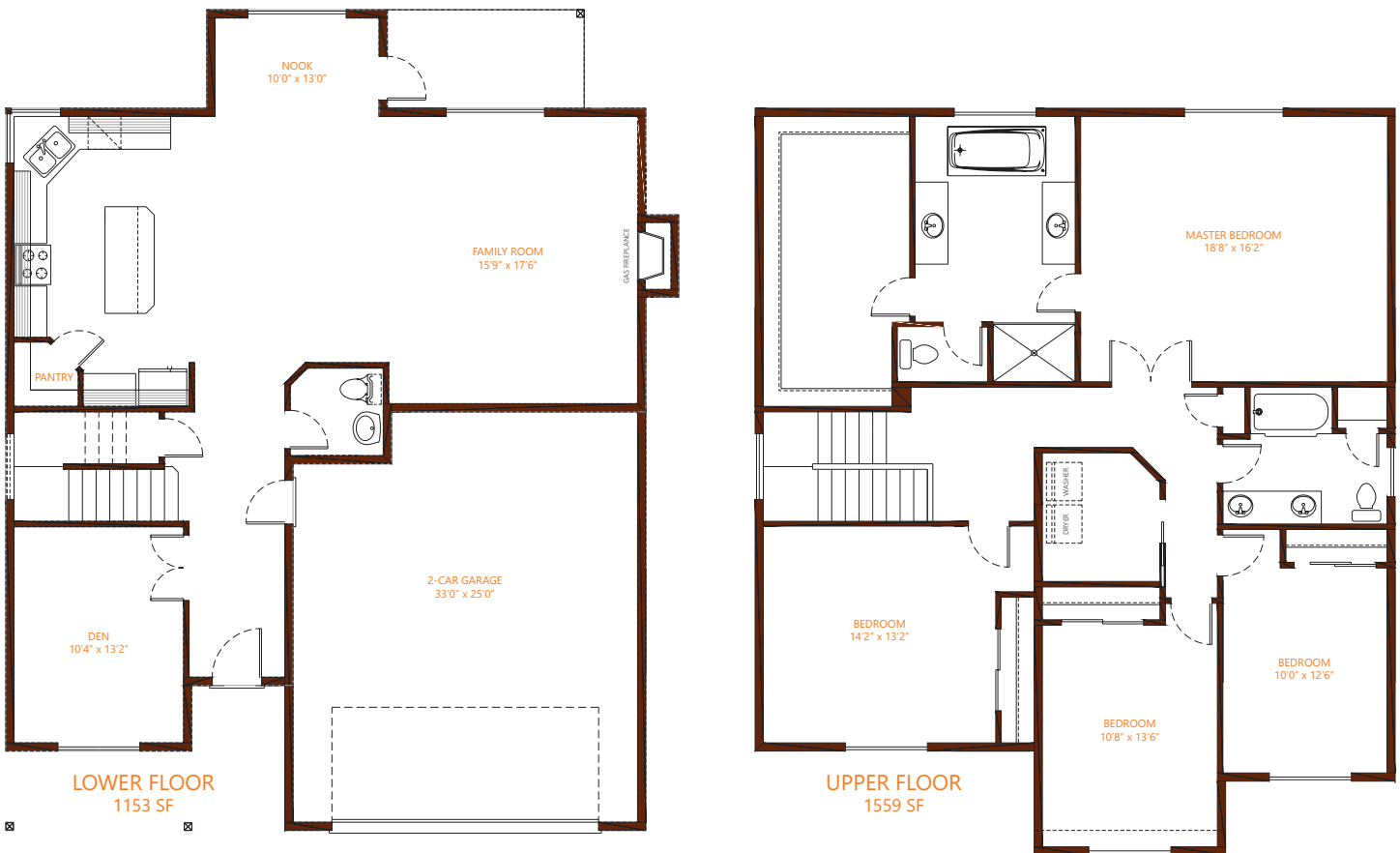
\* JB Homes reserves the right to change elevations, specification, materials and pricing without prior notice. Variations within the floor plans and elevations may exist. Square footages are approximate and may vary. All floor plans and elevations are artist's conceptions.



# CEDAR CREEK

MODEL HOME: 3368 N 10TH STREET  
RIDGEFIELD, WA 98642  
JBHOMESWA.COM

## THE 2712 2-CAR



**NATHAN CANO, BROKER**

Hire an Agent, Get a Team  
www.canorealestate.com

**360-558-3602**

jbhomes@canorealestate.com  
www.jbhomeswa.com



WA LICENSE:  
JBHOMH\*914Q5

\* JB Homes reserves the right to change elevations, specification, materials and pricing without prior notice. Variations within the floor plans and elevations may exist. Square footages are approximate and may vary. All floor plans and elevations are artist's conceptions.