



HERITAGE COUNTRY ESTATES

MODEL HOME: 401 E SPRUCE AVE
LA CENTER, WA 98629
JBHOMESWA.COM

THE 1874 2-CAR



1874 2-CAR GARAGE PLAN

BASE PRICE \$429,900

FLOORPLAN DETAILS

- 1,874 Square Feet
- 1 Story
- 3 Bedroom
- 2 Bathroom
- Great Room
- Laundry Room
- Dining room
- Den
- 2 Car Garage
- Pantry
- Walk-in Master Closet
- Soaking Tub in Master with Tile Surround
- Covered Front Entry Porch
- Covered Rear Porch

THIS HOME'S FEATURES

- Covered deck or patio
- Fully landscaped with irrigation and fencing
- Gas fireplace w/ Blower
- Stainless steel appliances
- 95% efficient gas forced-air furnace
- Air conditioning
- Laminate flooring
- Slab countertops
- Millwork wrapped windows
- James Hardie fibercement lap siding and trim, including all windows
- Finished garage with opener, remote and keypad
- 30 year roof
- Tiled bathroom counters
- 9' ceilings



NATHAN CANO, BROKER

Hire an Agent, Get a Team
www.canorealestate.com

360-558-3602

jbhomes@canorealestate.com
www.jbhomeswa.com



WA LICENSE:
JBHOMH*914Q5

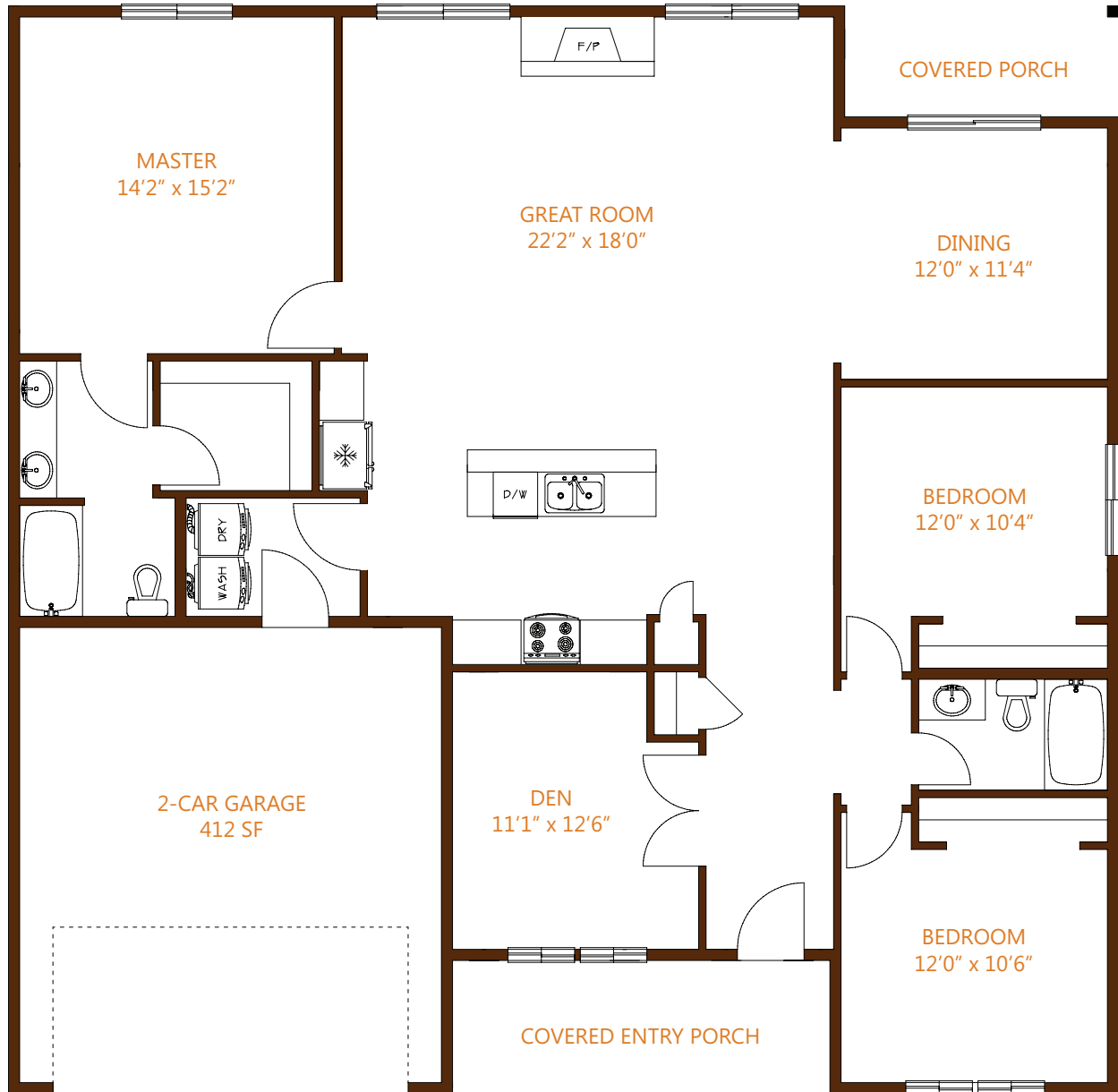
* JB Homes reserves the right to change elevations, specification, materials and pricing without prior notice. Variations within the floor plans and elevations may exist. Square footages are approximate and may vary. All floor plans and elevations are artist's conceptions.



HERITAGE COUNTRY ESTATES

MODEL HOME: 401 E SPRUCE AVE
LA CENTER, WA 98629
JBHOMESWA.COM

THE 1874 2-CAR



NATHAN CANO, BROKER

Hire an Agent, Get a Team
www.canorealestate.com

360-558-3602

jbhomes@canorealestate.com
www.jbhomeswa.com



WA LICENSE:
JBHOMH*914Q5