



# HERITAGE COUNTRY ESTATES

MODEL HOME: 401 E SPRUCE AVE  
LA CENTER, WA 98629  
JBHOMESWA.COM

THE **2446 3-CAR/5-CAR**



**3-CAR BASE PRICE \$459,900**

**5-CAR BASE PRICE \$489,900**

## FLOORPLAN DETAILS

- 2,446 Square Feet
- 2 Story
- 3 or 5 Car Tandem Garage
- 4 Bedroom
- 2-1/2 Bathroom
- Great Room
- Laundry Room
- Den and Loft
- Dining Nook
- Pantry
- Walk-in Master Closet
- Soaking Tub in Master with Tile Surround
- Covered Front Entry Porch
- Covered Rear Porch

## THIS HOME'S FEATURES

- Covered deck or patio (plan specific)
- Fully landscaped with irrigation and fencing
- Gas fireplace w/ Blower
- Stainless steel appliances
- 95% efficient gas forced-air furnace
- Air conditioning
- Laminate flooring
- Slab countertops
- Millwork wrapped windows
- James Hardie fibercement lap siding and trim, including all windows
- Finished garage with opener, remote and keypad
- 30 year roof
- Tiled bathroom counters
- 9' ceilings on main floor



**NATHAN CANO, BROKER**

*Hire an Agent, Get a Team*  
www.canorealestate.com

**360-558-3602**

jbhomes@canorealestate.com  
www.jbhomeswa.com



WA LICENSE:  
JBHOMH\*914Q5

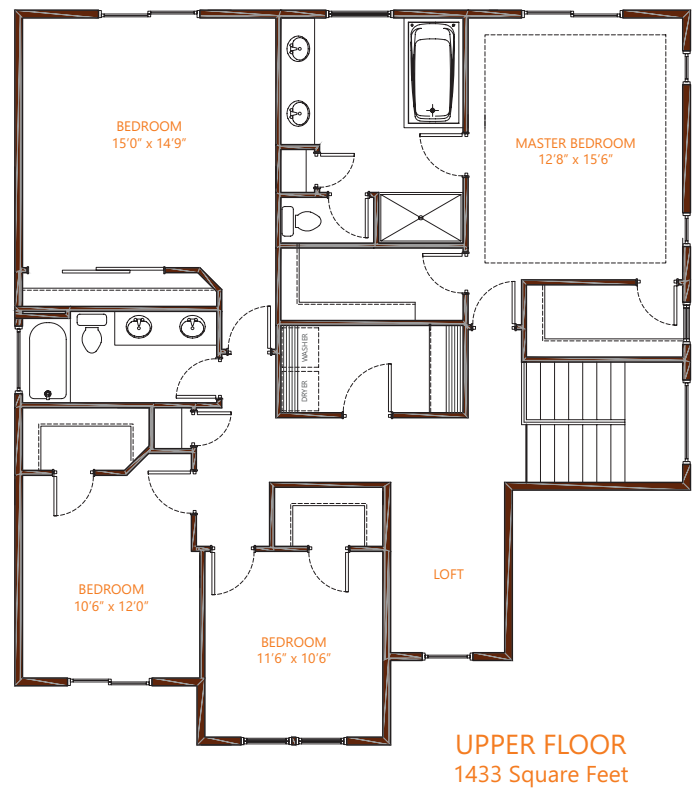
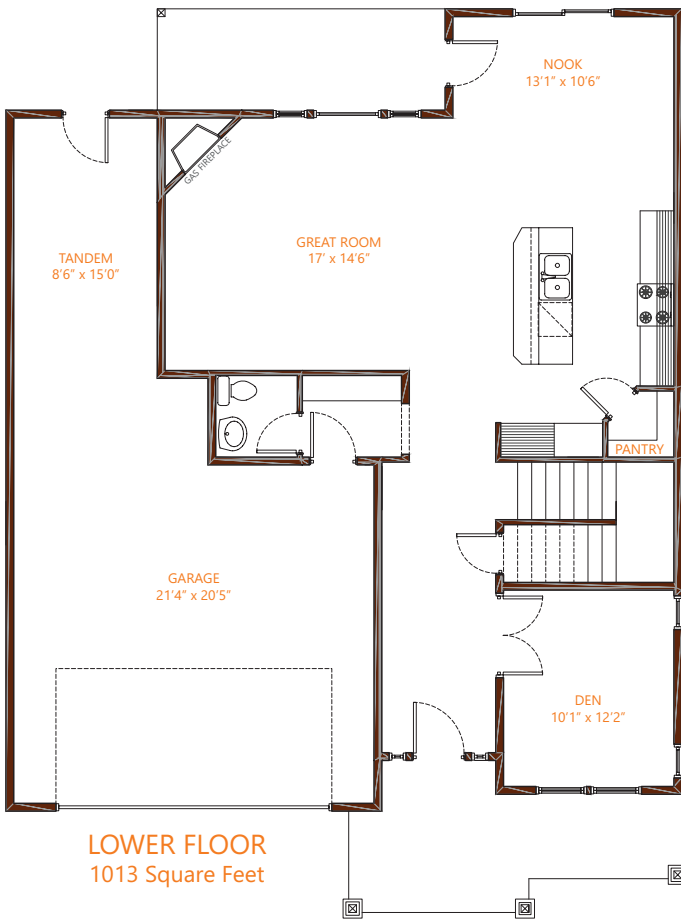
\* JB Homes reserves the right to change elevations, specification, materials and pricing without prior notice. Variations within the floor plans and elevations may exist. Square footages are approximate and may vary. All floor plans and elevations are artist's conceptions.



# HERITAGE COUNTRY ESTATES

MODEL HOME: 401 E SPRUCE AVE  
LA CENTER, WA 98629  
JBHOMESWA.COM

THE **2446 3-CAR/5-CAR**



**NATHAN CANO, BROKER**

Hire an Agent, Get a Team  
www.canorealestate.com

**360-558-3602**

jbhomes@canorealestate.com  
www.jbhomeswa.com



WA LICENSE:  
JBHOMH\*914Q5

\* JB Homes reserves the right to change elevations, specification, materials and pricing without prior notice. Variations within the floor plans and elevations may exist. Square footages are approximate and may vary. All floor plans and elevations are artist's conceptions.